

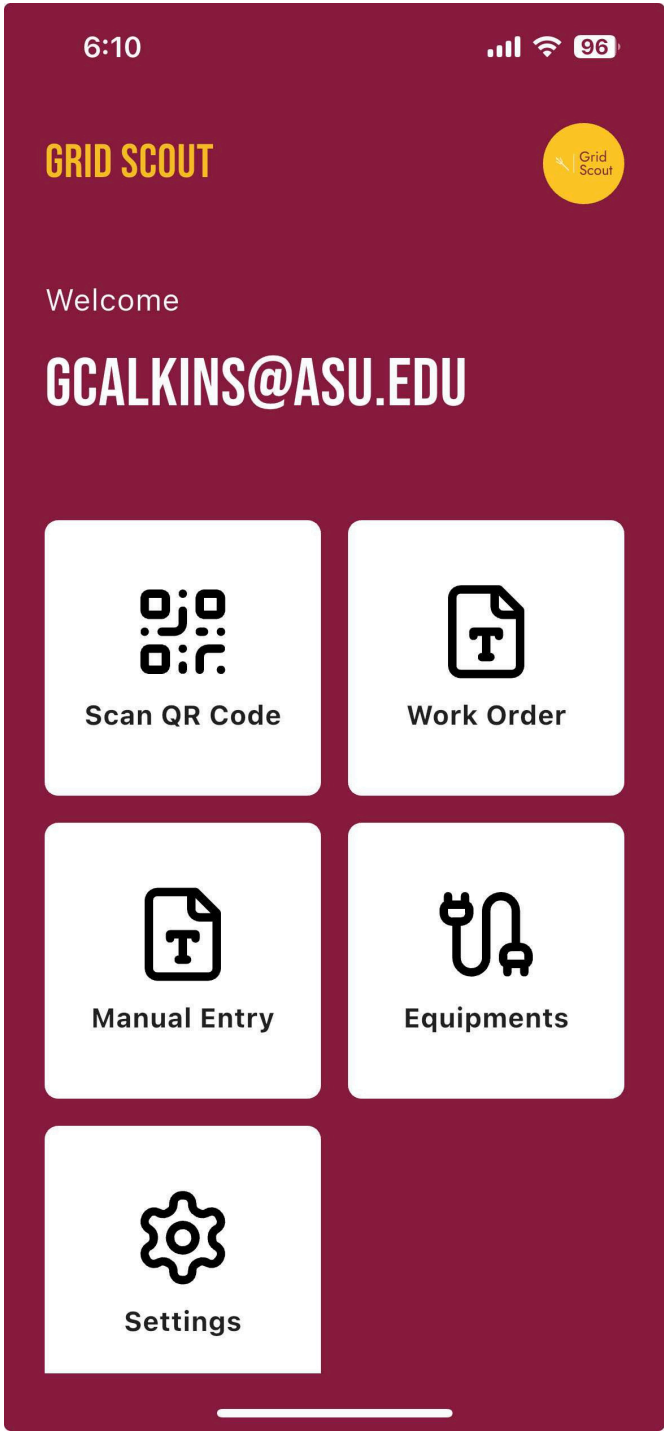
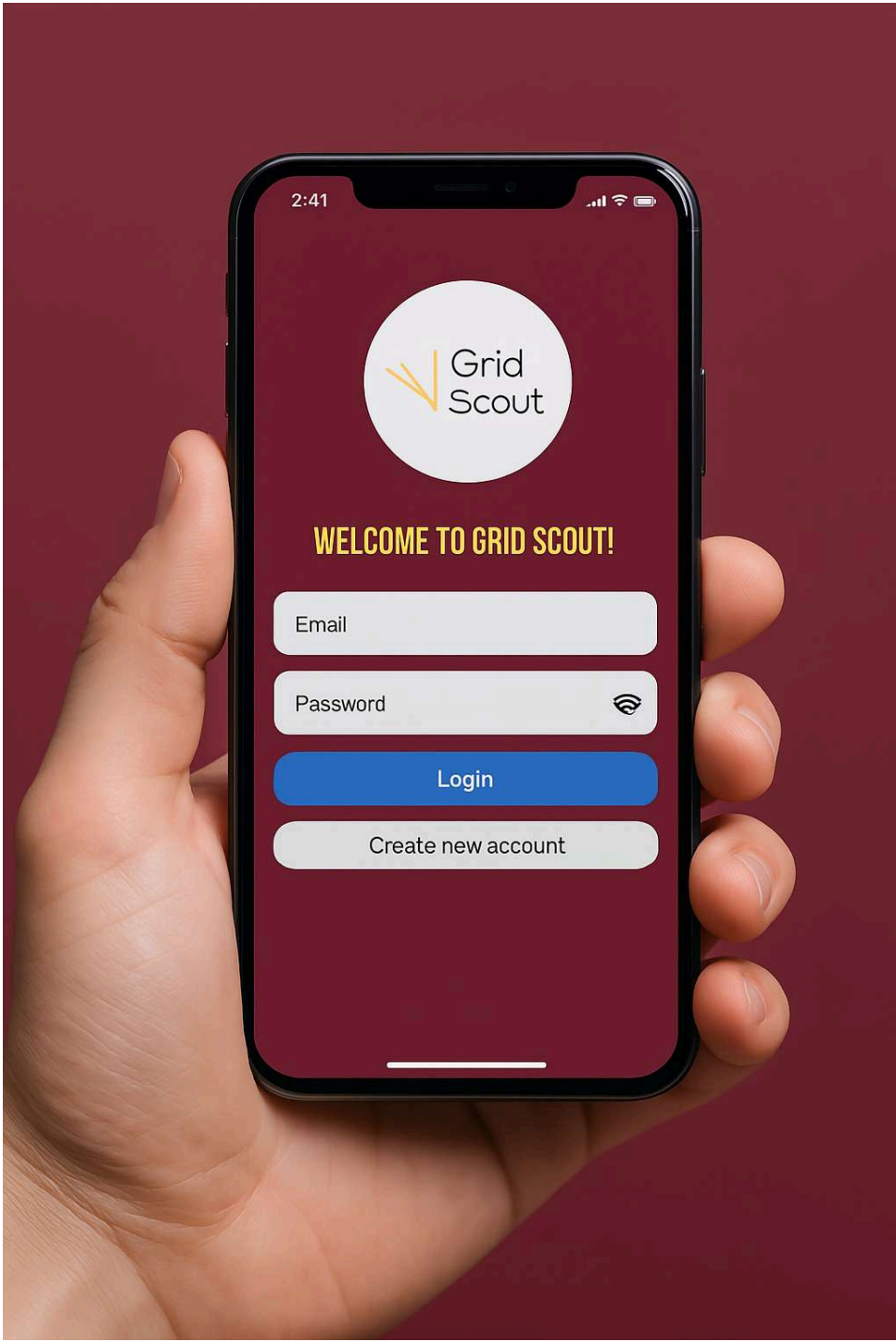
Smart Data Collection & Model Creation Tool for Electric Power Distribution Systems

Gareth Calkins, Carlos Desio, Musheer Gorani,
James McCain, Seth Palkki
Mentor: Meng Wu



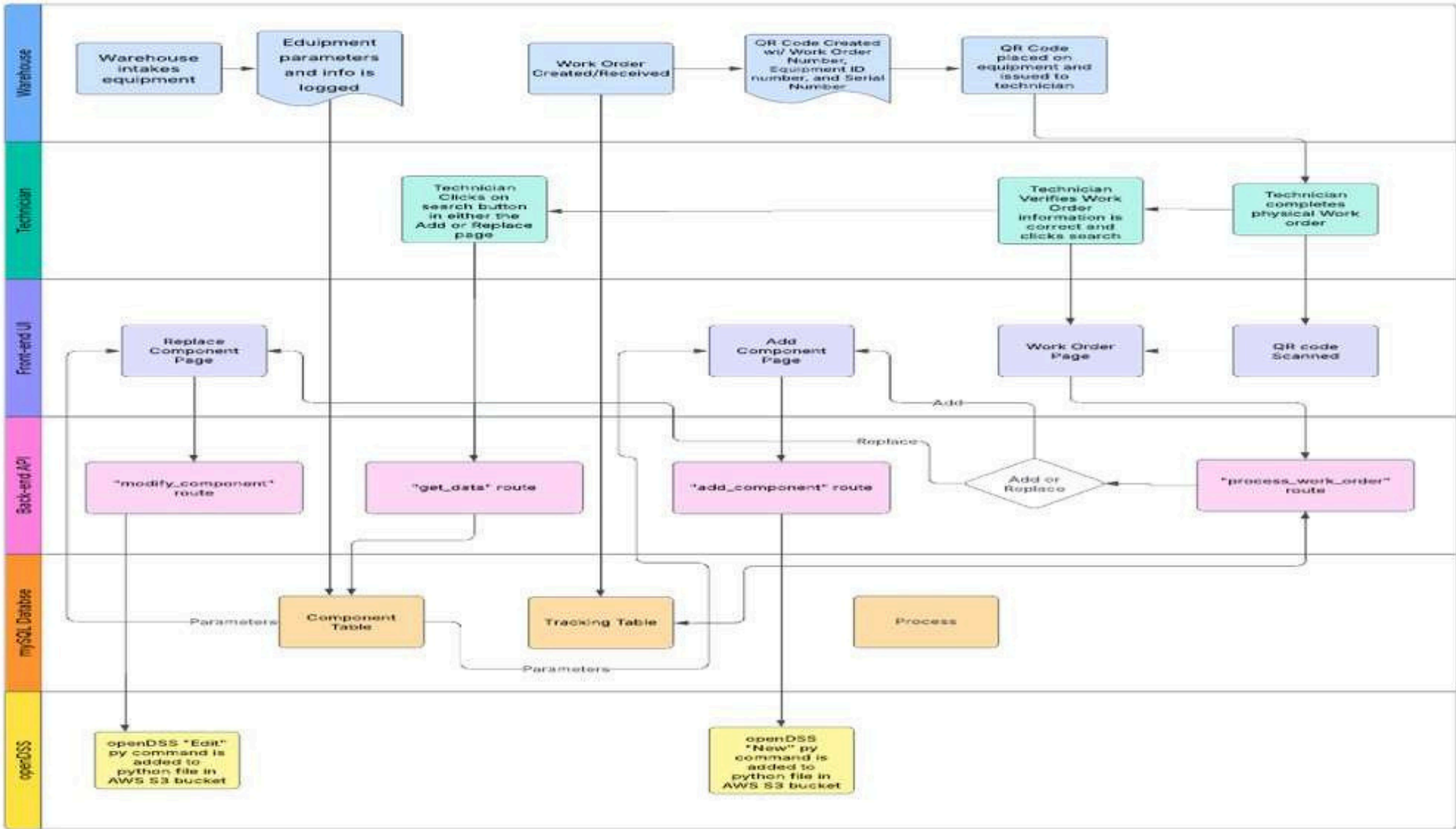
Introduction

GridScout is a smart data collection and model creation tool for electric power distribution systems that allows for rapid in-field distribution network modeling during equipment installation and maintenance via a mobile device application operated by technicians and other utility personnel.

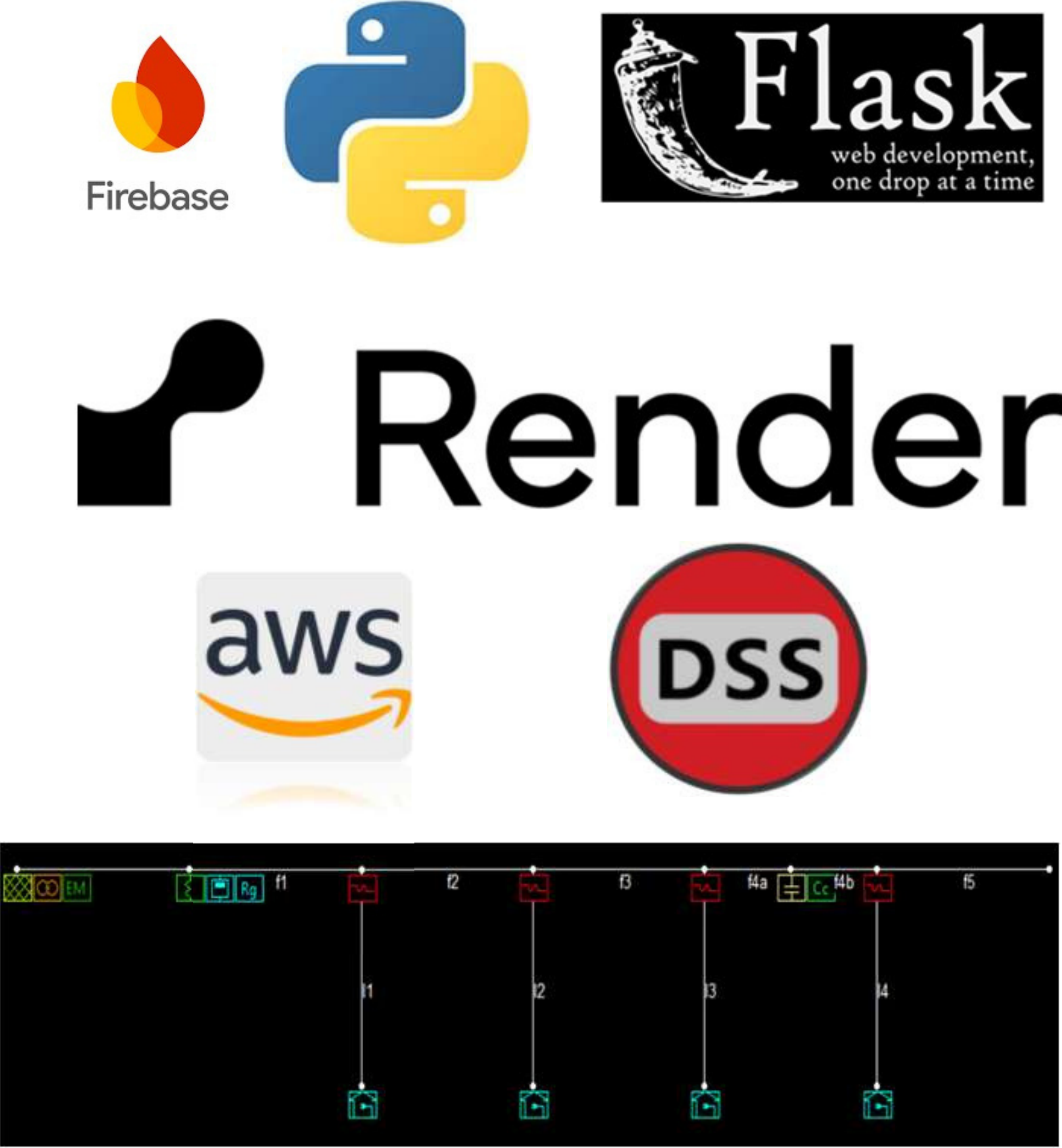


App Processes and Design Flow

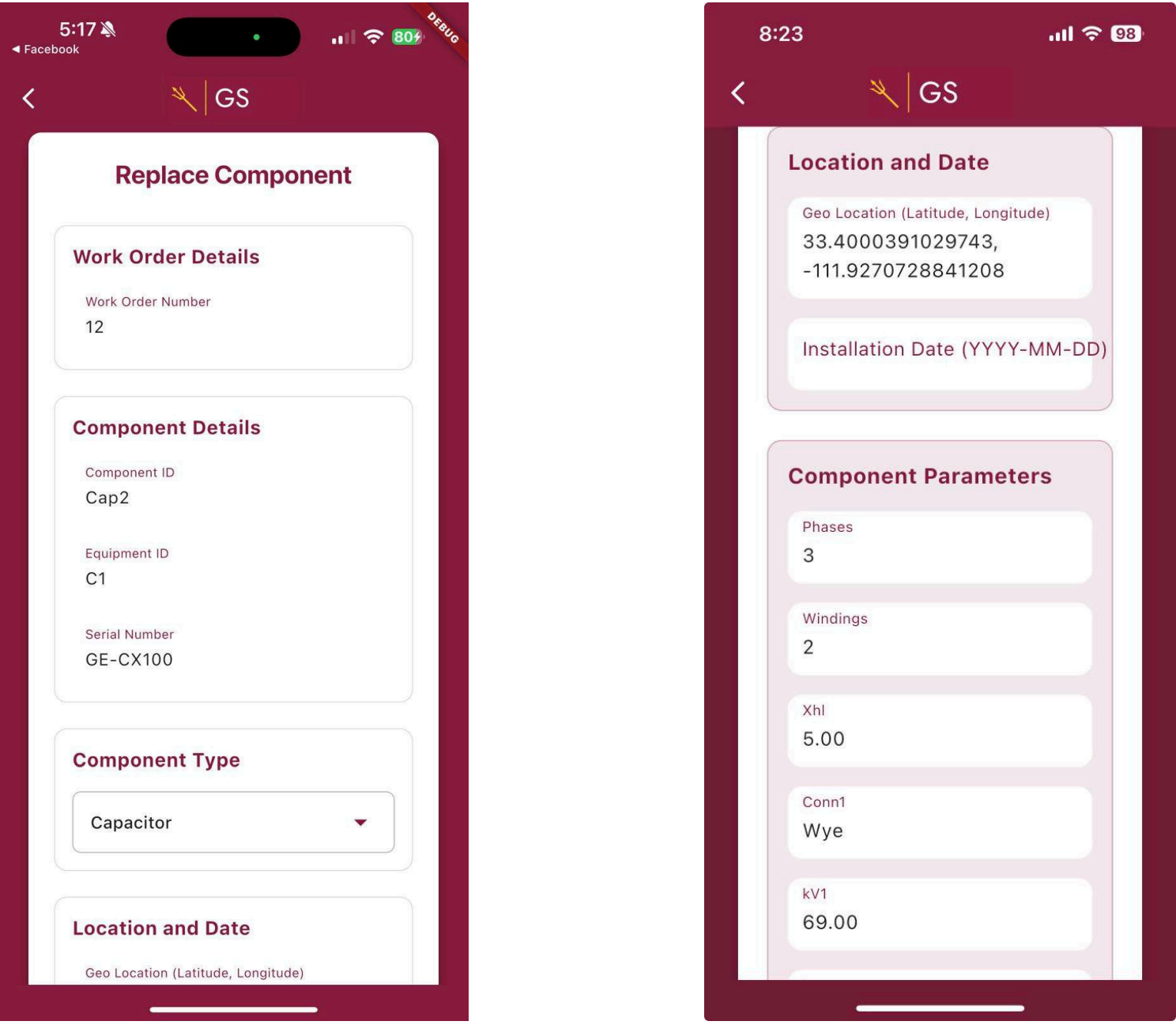
From the field to the office, GridScout will make updating databases and schematics simple and efficient.



Functionality



Conclusion



The fundamental goal of GridScout is to reduce time spent, personnel required, network inaccuracies, and costs for utilities to efficiently map and manage their distribution networks. By implementing GridScout, utilities will gain complete visibility of electric power distribution models, enabling them to fully monitor and control distributed energy resources (DERs) to ensure reliable service.